

# the Daily STEM

Volume 1 Issue 8

June 16 2019

## STEM+Sports

Do you play baseball or softball? Did you know that engineering can help you be a better player?

Andre Lipcius played baseball at the University of Tennessee and was recently drafted in the 3<sup>rd</sup> round of the Major League Baseball Draft. But as a student, he studied Nuclear Engineering. That's a part of science that uses atoms to make energy or help in hospitals. Engineering is focused on designing things and making things better. To be a good engineer, you need to be good at problem solving. And that is what helped Andre become a better baseball player. He would play a game, then watch video with his coach to find out why he didn't hit the ball or catch the ball.

To read more: [bit.ly/2Rhq9dN](http://bit.ly/2Rhq9dN)



## STEM on Car Rides

You've probably felt bored during a ride in the car. Here's a fun game to play: Start by finding a 0, then a 1, then a 2... Or write the numbers 1-100 and cross off the ones you see. Before you know it, you'll be there!



## STEM in the News

What is one thing your body can not live without? There are many answers, but for Temie Giwa-Tubosun, the answer is blood.



She is helping hospitals in her country of Nigeria get blood in time to save lives. If someone starts bleeding, they need more blood

added to their body. That's called a transfusion. But there are usually shortages of blood, so it's kept in one central location. Temie devised an idea to get blood to hospitals quicker than the 24 hours it usually took. She used Google Maps and a motorcycle to get delivery times down to 45 minutes. And that is saving lives. What kind of problems can you solve?

To read more: [bit.ly/2WJ6ULg](http://bit.ly/2WJ6ULg)

## STEM Challenge

Summer time is great for STEM fun outside! Can you make a birdhouse? Did you know you can build a birdhouse out of a gourd?

Here's some instructions:

[bit.ly/2WKfg5A](http://bit.ly/2WKfg5A)



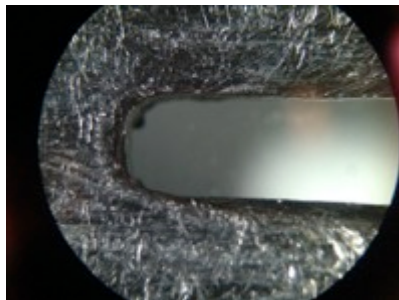
## Mystery Photo

What's under the microscope?

(answer next week)

Last week's answer:

a butterfly wing



## The Puzzle

Suppose you have two glasses, one holds 9 cups of water and the other



4 cups. How can you measure exactly 6 cups of water into the bigger cup?

Last week's answer: Add a line to the + in  $5+5+5=550$  to make  $545+5=550$

Chris Woods [dailystem.com/news](http://dailystem.com/news)